



LSS ENGINEERING

LIFE SUPPORT SYSTEM



LSS ENGINEERING

LIFE SUPPORT SYSTEM

Regd. office : A-26/11, Prem Nagar, New Delhi-110086

Branch Office: Near Mithila Dental College,
Leheria sarai, Darbhanga, Bihar

Website: www.lssengg.com

SITC OF

- Centralized Medical Gas Pipe Line System
- Modular O.T., ICU, NCS
- O.T. Equipments
- Hospital Furniture
- Medical Equipments
- Patient Monitor

About the Company

LSS Engineering is a name synonymous with quality and reliability when it comes to offering the latest and unmatched quality solutions for medical infrastructure. We are considered the one-stop destination for Medical Gas Pipeline System, Modular Operation Theatre, ICU and various other healthcare solutions such as Patient Monitor, Baby Warmer and LED Phototherapy. We established in year 2014 and Catering to India as well as Global Market

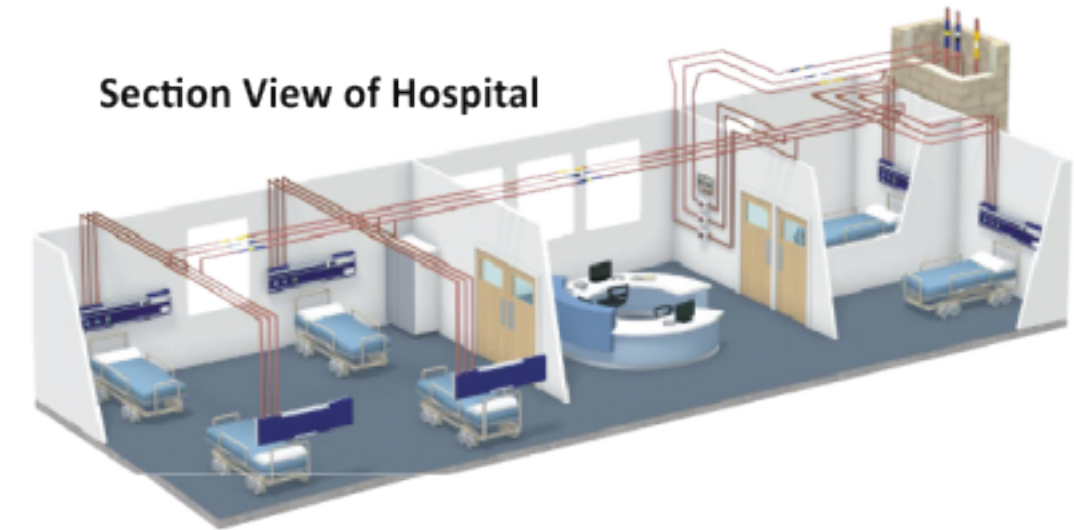
our mission

We work on the mission of raising our standards high in terms of client service and quality product. Our unit is formed on three pillars and these are honesty, transparency and quality.

our vision

We have commenced our journey with a single vision to handle the medical equipment needs of the clients and later it was sliced up into numerous desire

Section View of Hospital



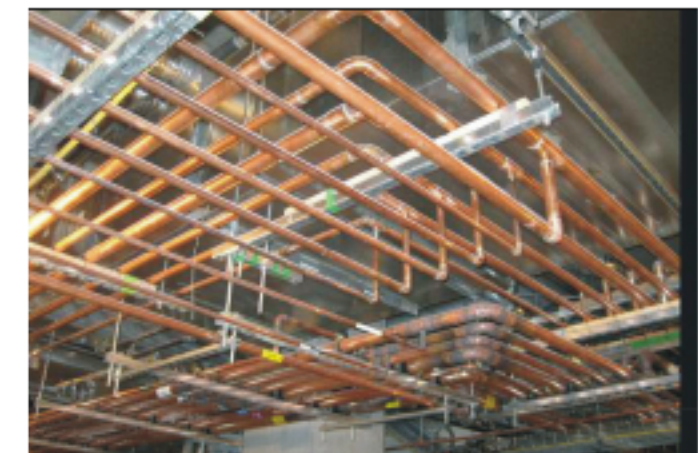
Control Panel



Gas Manifold



Manifold



Medical Gas Pipe Line

MODULAR O.T.

LSS ENGINEERING



OT VIEW



S. Pendant



S. Control Panel



X-Ray Viewer



Peripheral Light



O.T. Table

Mob.: 9971087971, Email ID : info@lssengg.com, Website : lssengg.com

LSS ENGINEERING

ICU & ICU Beds

LS-101E



ICU BED ELECTRIC (ABS PANEL & ABS RAILING)

- ✓ Function of Back rest, footrest, Hi.Lo. adjustment, forward tilting, backward tilting with Cable remote control.
- ✓ Epoxy powder coated bed frame, mounted on Luxury castors (2 with Brakes).
- ✓ Abs Head & foot board, PP hiding side rails.



Size 2120x1000 x460-720mm (L.W.H.)

LS-102



ICU BED MECHANICAL (ABS PANEL & ABS RAILING)

- ✓ Frame work made of rectangular M.S. tube.
- ✓ 4 Section top made of perforated M.S. sheet.
- ✓ Back rest, Knee Rest & TB/RTB Positions maneuvered by separate screw from foot end.
- ✓ ABS moulded head and foot panels.
- ✓ ABS four safety side Railing
- ✓ SS IV rod with four locations.
- ✓ Bed mounted on 150mm dia castor (2 with brakes).
- ✓ Finish: Epoxy Powder Coated.



Size 2120x1000 x460-720mm (L.W.H.)

LS-103



ICU BED MECHANICAL (SS PANEL & COLLAPSIBLE RAILING)

- ✓ Frame work made of rectangular M.S. tube.
- ✓ 4 Section top made of perforated M.S. sheet.
- ✓ Back rest, Knee Rest & TB/RTB Positions maneuvered by separate screw from foot end.
- ✓ Stainless steel tubular head and foot bows with laminated panels.
- ✓ Collapsible aluminum safety side railings.
- ✓ SS IV rod with four locations.
- ✓ Bed mounted on 150mm dia castor (2 with brakes).
- ✓ Finish: epoxy powder coated.



Size 2120x1000 x460-720mm (L.W.H.)

Mob.: 9971087971, Email ID : info@lssengg.com, Website : lssengg.com

ICU & FOWLER Bed

LSS ENGINEERING

LS-104E



FOWLER BED ELECTRIC (ABS PANEL & ABS RAILING)

Specification:

- ✓ Frame work made of Rectangular M.S. Tube
- ✓ 4 Section Top made of perforated M.S. Sheet.
- ✓ Back Rest, Knee Rest Positions maneuvered by Cable remote control
- ✓ ABS molded head and foot Panels
- ✓ ABS four Safety side railing.
- ✓ Stainless Steel IV Rod with four Locations.
- ✓ Bed Mounted on 100mm Dia Castor (two with brakes.)
- ✓ Finish: Epoxy Powder Coated.

Overall Size: 206L x 90W x 60H cms.

FOWLER BED ELECTRIC (ABS PANEL & COLLAPSIBLE RAILING)

- ✓ Frame work made of rectangular M.S. tube.
- ✓ 4 Section top made of perforated M.S. sheet,
- ✓ Back rest, Knee Rest & TB/RTB Positions maneuvered by separate screw from foot end.
- ✓ ABS moulded head and foot panels.
- ✓ Collapsible aluminum safety side railings.
- ✓ SS IV rod with four locations.
- ✓ Bed mounted on 150mm dia castor (2 with brakes).
- ✓ Finish: Epoxy Powder Coated.

Overall size : 206Lx 90W x 60H cms.

LS-105E



FOWLER BED WITH ABS PANEL

- ✓ Frame work made of rectangular M.S. Tube
- ✓ 4 Section Top made of perforated M.S. Sheet
- ✓ Back Rest, Knee Rest Positions manoeuvred by Separate screw from foot end
- ✓ ABS molded head and foot panels
- ✓ Stainless IV Rod with four Locations
- ✓ Bed mounted on 100mm Dia Castor (2 with brakes)
- ✓ Finish: Epoxy Powder Coated
- ✓ Optional: Collapsible Safety side Railing at Extra Cost
- ✓ Hospital Fowler Bed

Overall size 206L x 90W x 60H cms

LS-106



FOWLER BED (S.S. MICA PANEL)

- ✓ Frame work made of rectangular M.S. Tube
- ✓ 4 Section Top made of perforated M.S. Sheet
- ✓ Back Rest, Knee Rest Positions manoeuvred by Separate screw from foot end
- ✓ Stainless IV Rod with four Locations
- ✓ Bed mounted on 100mm Dia Castor (2 with brakes)
- ✓ Finish: Epoxy Powder Coated

Overall size 206L x 90W x 60H cms

LS-107



Mob.: 9971087971, Email ID : info@lssengg.com, Website : lssengg.com

LSS ENGINEERING

Semi Fowler Beds & Ward Beds

LS-108



SEMI FOWLER BED (M.S. PANEL)

- ✓ Frame work made of Rectangular M.S. Tube
- ✓ 2 Section Top made of perforated CRCA M.S. Sheet.
- ✓ Back Rest Section, manetttered by Screw Handle from Fool End
- ✓ Tubular Head & Foot bows of unequal height with vertical bars support.
- ✓ Four Locations for I.V. Rod.
- ✓ Finish: Epoxy Powder Caged.

Size 198Lx90W x60Hcms.

SEMI FOWLER BED (ABS PANEL)

- ✓ Frame work made of Rectangular M.S. Tube
- ✓ 2 Section Top made of perforated M.S. Sheet.
- ✓ Back Rest Section, manetttered by Screw Handle from Fool End
- ✓ ABS melled. Head 8 Foot Panels
- ✓ Four Locations for I.V. Rod.
- ✓ Finish: Epoxy Powder Caged.

Overall Size- 198L x 90W x 60H cms.

LS-109



LS-110



SEMI FOWLER BED (S.S. PANEL)

- ✓ Frame work made of Rectangular M.S. Tube
- ✓ 2 Section Top made of perforated M.S. Sheet.
- ✓ Back Rest Section, manetttered by Screw Handle from Fool End
- ✓ Stainless steel tubular Head & Foot bows with laminated panels.
- ✓ Four Locations for I.V. Rod.
- ✓ Finish: Epoxy Powder Caged.

Size 198Lx90W x60Hcms.

EMERGENCY & RECOVERY TROLLEY (HYDRAULIC) LS-111

Framework made of round & rectangular tubes mounted on heavy-duty castors of 12.5 cm dia with two brakes. Offers trendenberg & reverse position and height adjustable by hydraulic pump fitted on one side of the trolley. Removable type Radio-lucent top in two sections for obtaining backrest and fitted with a cassette holding tray underneath. Supplied with swing away type safety railing telescopic saline rod adjustable, steel storage tray and oxygen cylinder cage Finish in epoxy powder coated.

Size 210Lx65Wx65-95H cms



Mob.: 9971087971, Email ID : info@lssengg.com, Website : lssengg.com

Ward Bed

LSS ENGINEERING



LS-112

HOSPITAL WARD PLANE BED (SS PANEL)

- Frame work made of rectangular
- Top made of Perforated CRCA MS Sheet
- Stainless Steel tubular Head & Foot bows with laminated Panels
- Locations for Four I.V. Rod
- Finish: Epoxy Powder Coated

Overall size 198L x 90W x 60H cms



LS-113

HOSPITAL WARD PLANE BED (MS PANEL)

- Frame work made of M. S. Tube
- Tubular Head & Foot Bows of unequal height
- Locations for Four I.V. Rod
- Finish: Epoxy Powder Coated

Overall size 198L x 90W x 60H cms



LS-114

PEDIATRIC BED

- Main Frame Of Rectangular Pipe
- Perforated CRCA Sheet Top
- Tubular Head & Foot Bows of Equal Height With Vertical Tube Support
- Drop Down Type Safety Side Railing
- Epoxy Power Coated

Size 137Lx76Wx60H CMS



LS-115

ATTENDANT BED

- Frame work made of Rectangular M.S. Tube MS Tubular Pipe
- Fitted with Perforated CRCA sheet top.
- Mild steel tubular Head & foot bows.
- Legs fitted with PVC stumps.
- Finish: Epoxy Powder Caged.

Size 167Lx60W x40H cms.



LS-116

ATTENDANT BED CUM CHAIR

- Overall approx size 1880mm x 400mm H.
- M.S. tubular frame work mounted on PVC Stumps.
- Epoxy Powder Coated.
- Three Section Foldable Chair

Size:1500/1300 mm



LS-117

COLLAPSIBLE RAILING

- Aluminum made
- SS tubular Pipe Foldable

Size:1500/1300 mm

Mob.: 9971087971, Email ID : info@lssengg.com, Website : lssengg.com

LSS ENGINEERING

ICU, Ward & O.T. Furniture

STRETCHER TROLLEY (S. STEEL)

LS-118

- Stainless steel tubing frame work.
- Removable stretcher top made of dished to depth in centre on a tubing frame having with strips support underneath.
- Trolley mounted on 150mm dia swivel castors with two brakes.
- Provided with side railing, IV Rod, Tray and cylinder cage.
- Finish in epoxy powder coated.

Size 2030L x 560W x 820H mm



STRETCHER TROLLEY

LS-119

- M.S. tubular construction with MS removable stretcher.
- Mounted on 150mm dia. Castors (Two with Brakes)
- Epoxy Powder Coated

SIZE 213 x 56 x 81 cms (LxWxH)



PATIENT TROLLEY 2 SECTION TOP

LS-120

- MS tubular pipe framework. Detachable stretcher with fi ed mattress top.
- Backrest adjustable on ratchet. Provided with collapsible side-railings.
- Mounted on 150mm diameter castor wheels, two with brakes. Finish in epoxy powder coating.



CONNECTING STRETCHER

LS-121

- MS tubular frame mounted on four swivel castors, 15 cm dia.
- The under - carriages can be interlocked lengthwise and the stretcher rolled over from one carriage to another on rollers.
- Stretcher can be raised at one end on ratchet. SS IV rod with two locations.
- Gas cylinder provision in one under-carriage.
- Epoxy powder coated.



OBSTETRIC DELIVERY TABLES TELESCOPIC FIXED HEIGHT

LS-122

- SS Tubular frame work mounted on PVC stumps
- Stainless Steel top in three sections
- Trendlenburg positions adjustable by MS mechanical gear system
- Backrest section adjustable on ratchet
- Leg Section can slide under the main section
- A pair of knee crutches with height adjustable
- With Stainless Steel Sink / Bowl
- Fine finished

Approx. Dimensions: 72"Lx27"Wx30"H



Mob.: 9971087971, Email ID : info@lssengg.com, Website : lssengg.com

INSTRUMENT TROLLEY WITH QUALITY CASTORS

LS-123



- ✓ SS Tubular Construction with SS top & shelf
- ✓ Mounted on 100mm dia. Castors.
- ✓ Three side guard railing on upper shelf.
- ✓ Size : A - 24"x18"x32"
- ✓ B - 30"x18"x32"
- ✓ C - 36"x22"x32"

DRESSING TROLLEY WITH QUALITY CASTORS

LS-124



- ✓ Stainless Steel tubular construction.
- ✓ Four side guard railing on both shelves.
- ✓ With Stainless steel bucket & basin & push
- ✓ Size : A - 24"x18"x32"

MEDICINE TROLLEY WITH 4 DRAWER

LS-125



- ✓ Two Drawers under each shelf
- ✓ Three side guard rail on both shelves
- ✓ Epoxy Powder coated

OVER BED TABLE

LS-126



Features:

- ✓ Superior functionality
- ✓ Smooth finish
- ✓ Sturdy design

Specification:

- ✓ Overall Size : 42"L x 16"W x 39"H
- ✓ Tubular frame work mounted on 5 cms castors.
- ✓ Fixed Laminated top 30" x 16".
- ✓ Epoxy Powder Coated.

OVER BED TABLE (MANUAL ADJUSTABLE)

LS-127



Rectangular frame work mounted on 5 cms castors 30" x 16" laminated top adjustable by side knob. Epoxy Powder Coated. Also available in All Stainless Steel

OVER BED TABLE (ADJUSTABLE BY GEAR HANDLE)

LS-128



M.S. Rectangular frame work mounted on 5 cms castors. 30" x 16" Laminated top adjustable by gear handle.

BED SIDE TROLLEY

LS-129

S.S. Round Pipe frame with SS Top. Legs with rubber stumps.



Size 16"x16" x30" (L.W.H.)

BED SIDE LOCKER (STD)

LS-130

M.S. Square Pipe frame & SS Top. Legs with rubber stumps.



Size 16"x16" x30" (L.W.H.)

BED SIDE LOCKER (STD)

LS-131

S.S. Square Pipe frame with MS Top. Legs with rubber stumps.



Size 16"x16" x30" (L.W.H.)

BED SIDE LOCKER (DELUXE)

LS-132

- ✓ CRCA Sheet constructions. Having one box and one drawer
- ✓ S.S. Top with three sides raise edges
- ✓ epoxy Powder coated
- ✓ with two coster 50mm



Size 16"x16" x32" (L.W.H.)

EXAMINATION TABLE 2 SECTION

LS-133



- ✓ M.S. Top in 2 sections. Head rest adjustable.
- ✓ MS tubular legs with rubber stumps.
- ✓ Epoxy Powder coated.

Size 72"x20"x30" (LXWXH).

WASH BASIN STAND (SINGLE)

LS-134

- ✓ Height 840mm stainless steel single bowl of 35 mm. Dia. Tubular ms steel frame work mounted on three swivel castors 50mm Dia. Finish in epoxy powder coated.
- ✓ also available Stainless Steel



WASH BASIN STAND (DOUBLE)

LS-135

- ✓ Height 840mm two Stainless steel bowl of 35 mm. Dia. Tubular ms steel frame work mounted on three swivel castors 50mm Dia. Finish in epoxy powder coated.
- ✓ also available Stainless Steel



WASH BASIN STAND (DOUBLE)

LS-136

- ✓ Height 840mm two Stainless steel bowl of 35 mm. Dia. Tubular ms steel frame work mounted on three swivel castors 50mm Dia. Finish in epoxy powder coated.
- ✓ also available Stainless Steel



Ward & OT Furniture

LSS ENGINEERING

SOLID LINEN TROLLEY WITH CANVAS BAG

LS-137



- ✓ M.S. Tubular construction.
- ✓ With removable canvas bag
- ✓ Epoxy Powder Coated
- ✓ With caster 100mm

LINEN CHANGE TROLLEY

LS-138



- ✓ Frame work of MS Tubular/Square pipe. Mounted on 10cms castors. Two SS shelves with guard railing on both shelves. Pretreated and epoxy powder coated.

PATIENT REVOLVING STOOL

LS-139



- ✓ Four Legs M.S.
- ✓ S.S. Top

PATIENT REVOLVING STOOL

LS-140



- ✓ Framework of stainless steel tubular pipe mounted on four legs base with stainless steel foot ring. Stainless Steel Top. Adjustment of height by an accurately machined screw.

PATIENT REVOLVING STOOL CUSHIONED TOP

LS-141C



- ✓ Mounted on five swiveling castors, strong steel construction, top with cushioned washable material. Height of the stool is adjustable by Gas Pump controlled by hand lever at lower side of the seat.

ATTENDANT STOOL

LS-142



- ✓ Machine Press MS sheet top. Frame work of mild steel sheet angle legs supported with MS sheet channel. Mounted on rubber stumps. Finish in epoxy powder coated.

CYLINDER TROLLEY S.S.

LS-143



- ✓ M.S. Tubular construction
- ✓ Epoxy Powder Coated

LSS ENGINEERING

Ward & OT Furniture

FOOT STEP SINGLE/DOUBLE

LS-144



Tubular ms steel framework mounted on rubber shoes. Two step with rubber mat surrounded by aluminum angle. Finish in epoxy powder coated
Also Available Stainless Steel.

I.V. STAND (S. STEEL)

LS-145



Strong Stainless Steel construction. Mounted on moulded base fitted with 5 swivel castors of 50mm dia. Stainless steel rod with four hooks fitted in plastic moulded. Height adjustable from approx 1220 to 2340 mm.

Strong Ms tubular construction mounted on moulded base fitted with five swivel castors, 50mm dia. Chrome plated rod with double hooks height adjustable from approx 1220 to 2340 mm. Finish in epoxy powder coated.

BED SIDE SCREEN (3 PANELS)

LS-146



Same as ASI-128F but in three fold.
ALSO AVAILABLE IN EPOXY POWDER COATED STEEL

Size | 1680 H x 2440 W mm

BED SIDE SCREEN (4 PANELS)

LS-147F



Stainless Steel construction in four equal sections mounted on eight swiveling castors of 50mm dia. Finish in epoxy powder coated. Supplied with hook and spring for fixing curtain.

ALSO AVAILABLE IN EPOXY POWDER COATED STEEL
Size | 1680 H x 2440 W mm

EXAMINATION COUCH

LS-148



- ✓ Adjustable backrest by gas spring system.
- ✓ Two sectional upholstered top.
- ✓ Provided with three Drawers and three Cabinets.
- ✓ Tray for B.P. Apparatus provided near head rest.
- ✓ Epoxy Powder Coated.

Overall Approx size: 187L x 51W x 81H.

MAYO'S INSTRUMENT TROLLEY (MECHANICALLY)

LS-149



MS Tubing frame work. Height adjustable from 760 to 1270mm. Stainless steel tray. Size: 560 x 406mm. Stand mounted on four swivel castors 50mm dia. Finish in epoxy powder coated.

BABY CRADLE

LS-150



- ✓ Frame made of MS tubular
- ✓ Legs with rubber stumps.
- ✓ Detachable Baby cradle.
- ✓ Epoxy powder coated.

MAYO'S INSTRUMENT TROLLEY

LS-151



Rectangular CRC tubes mounted on 5 cms castors, height adjustable by side Knob. Finish : Pre-treated and Epoxy Powder Coated finish/ Stainless Steel Fra

Also Available in All Stainless steel

Overall Size : 76L x 46W x 81H cms.
Tray size S. S. : 56L x 40W cms

CRASH CART

LS-152



- ✓ Overall approx size: 940mm Lx490mm Wx1535mm H.
- ✓ Six colored removable bins and two polystyrene lockable storage units with three drawers have each.
- ✓ The top drawers have containers of different size.
- ✓ Four swivel castors, 125 mm Dia., two with brake.
- ✓ Complete with corner buffers, powder coated oxygen cylinder holder, S.S IV rod, S.S. shelves, cardiac massage board and electric lamp
- ✓ S.S. tubular frame.

LAPROSCOPY TROLLEY

LS-153



- ✓ 5 Section Top made of perforated CRCA MS sheet.
- ✓ Back Rest Section, maneuvered by Screw Handle from Foot End.
- ✓ Tubular Head & Foot Bows of unequal height.
- ✓ Overall Size: 1450mm x 540mm x 500mm.
- ✓ Finish: Epoxy Powder Coated
- ✓ Also Available Stainless Steel

INSTRUMENT CABINET

LS-154



- ✓ All M.S. Sheet construction.
- ✓ Four removable glass shelves.
- ✓ Door with Glass & Lockable Handle
- ✓ Epoxy powder coated.

WHEEL CHAIR

LS-155



- ✓ Foldable chromed steel frame.
- ✓ Detachable arm rest & foot rest.
- ✓ Solid rear wheel 24" & 8" front wheel
- ✓ Seat width 44cms & overall 63cms.
- ✓ Plastic commode seat
- ✓ Reclining back rest & elevating foot rest

COMODE STOOL

LS-156



- ✓ Steel Material Chrome Plated.
- ✓ Foldable
- ✓ Plastic Seat with Cover.

KICK BOWL/BUCKET

LS-157



- ✓ M.S. Tubular Construction
- ✓ Mounted on 10cms dia, Castors.
- ✓ Stainless Steel Basin

THREE SEATER CHAIR

LS-158



- M.S. Chrome Plated

BIO MEDICAL WASTE BINS

LS-159



All Stainless Steel bin and coloured powder coated. 20 ltr. capacity of each bin. Foot Operated peddle. Movable trolley mounted on four castors two with break

LS-160 OPERATING C-ARM TABLE HYDRAULIC



Versatile Super Deluxe O.T. Table is superior for general surgical procedures. Accurate positions can be achieved with easy mechanical operation. Five section stainless steel top & heavy base and column enhances the durability and hygiene. No gap, any leakage & high maintenance ensures durability & stability of the table.

Key Structure

- The five section Stainless Steel table top is equipped with removable, antistatic mattresses.
- All the positions are realized by a mechanical drive.
- The table is furnished with hard, robust stainless steel shell which provides the sense of dirt free & sanitized operations.
- The various positions such as Up-Down movements, Trendelenburg Reverse Trendelenburg, Lateral Tilts, Flex- Reflex, Chair Position as realized by remote control.
- Leg section & head section are interchangeable.

Technical Constraints

Top Dimension	: L1830 mm x W497 mm
Height Adjustment	: 762 mm - 987mm
Trendelenburg / Reverse	: 30° / 25°
Kidney Elevator	: 150 mm
Leg Rest (up / down)	: 15° / 90°
Lateral Tilt	: 20° / 20°
Back Rest (up / down)	: 80° / 25°
Head Rest (up / down)	: 20° / 60°



C-arm Compatible Orthopaedic Table Attachment

OBSTETRIC DELIVERY TABLES TELESCOPIC (ADJUSTABLE HEIGHT) LS-161



- ✓ Tubular frame work mounted on swiveling castors.
- ✓ Stainless steel top in three sections.
- ✓ Trendelenburg positions adjustable by pneumatic gas spring system.
- ✓ Hydraulically height adjustable by foot paddle from side.
- ✓ Backrest section adjustable on ratchet.

- ✓ Leg end section can slide under the main section
- ✓ A pair of knee crutches with height adjustable.
- ✓ Epoxy Powder coated.
- ✓ Also Available S.S. 202

Approx. Dimensions: 72"L x 27"W x 24"-32"H.

OBSTETRIC DELIVERY TABLES (3 SECTION) LS-162T



- ✓ Rectangular & square tube frame
- ✓ Three sections cushioned top
- ✓ Complete with SS bowls
- ✓ Height adjustable a pair of knee crutches
- ✓ Pre treated & epoxy powder coated.
- ✓ Backrest, seat, section adjustable by hand lever

Approx. Dimensions: 72"L x 22"W x 30H.

OPERATING TABLE HYDRAULIC (DELUXE) LS-163

The top segments are translucent for X-rays and enable taking pictures and monitoring a patient with a C-arm. The positions in the section table top are adjusted manually by mechanical drive. It's safe and robust mechanism prevents breakdown during an operation.

Key Structure

- With regular human strength, up-down table position can be fixed by stepping foot pedal downward
- The base is eccentric for trouble-free C-ARM movements.
- Leg & Head section are interchangeable
- Base & Column covered with stainless steel.

Technical Constraints

Top Dimension	: L 1905 X W 553 mm	Height Adjustment	: 787 mm -1042 mm
Trendelenburg / Reverse	: 30° / 25°	Lateral Tilt	: 20° / 20°
Kidney Elevator	: 150 mm	Back Rest (up / Down)	: 80° / 25°
Leg Rest (up / Down)	: 15° / 90°	Head Rest (up / Down)	: 20° / 60°



EXAMINATION CUM GYNAE TABLES LS-164



Two Section Top M.S. sheet in two sections. The head flap adjustable on rack, Leg end provided with removable basin and lithotomy rods. Finish in epoxy powder coated.

GENERAL SURGERY HYDRAULIC OPERATING TABLE
- Semi Electric Optional



SALIENT FEATURES :

- Precision made Hydraulic System with a single lever action. Hydraulic Lift controlled by a foot pedal.
- Five section stainless steel top gives anatomic adaptation to the patient body.
- Semi Electric Optional



Height Adjustment Position



Trendelenburg Position



Kidney Surgery Position



Lithotomy Position



Lateral Position



Chair Position

SUCTION MACHINE

LS-165



- ✓ M.S. cabinet epoxy powder coated with ss tray
- ✓ Fitted with 1/2 H.P. electric motor with oil immersed vacuum pump
- ✓ 2x2000ml glass graduated suction jars with rubber lids
- ✓ Vacuum gauge, vacuum control valve, overflow cut off device
- ✓ Power indicator & patient suction tubing
- ✓ Mounted on four castors
- ✓ (Also available with 2x2000ml polycarbonate jars)

ANESTHESIA MACHINE

LS-166



- ✓ Two Gases Rota meter Oxygen & Nitrous-Oxide
- ✓ Oxygen Flometer range 100 cc/min. to 10 liters/min., Nitrous Oxide Flometer range 200cc /min. to 12 liters/min.
- ✓ Standard Fresh Gas Outlet.
- ✓ Emergency Flush Valve at front Panel connected to incoming O2 supply
- ✓ Goldman type Halothane Vaporizer.

Size 2120x1000 x460-720mm (L.W.H.)

LS-167 AUTOCLAVE DRUM DOUBLE DRUM



High pressure water steam electrically heated vertical sterilizer used for sterilizing of surgical instruments, Dressing materials, Linen, Rubber, Plastic material, Injection liquids by means of steam under pressure of 15 to 20 PSI. (Adjustable) Triple chamber with inner chamber and steam jacket made of thick stainless steel jacket made of thick stainless steel jacket. All sterilizers are hydraulically tested upto 2.5 times of working pressure. Outer chamber made of stainless steel reinforced with M.S. Sheet Lid is made of thick stainless steel plate single piece and closed by wing nuts arrangement. Jointless neoprene gasket does not allow any leakage. Fitted with double safety valve, Water level indicator, water inlet and drain valves. Supplied complete with cord and plug but without dressing bins, To work on 220 volts, Single Ph, 50Hz, AC supply.

Note : " Also Available in All Stainless steel "

ME-8600 PATIENT MONITRO



Technical Spedicitaiion

- 12.1" color TFT LCD screen with multi channel waveforms display
- Rechargeble Lithium high energy built in Battery
- Easy to learn,easy to use, simplified menus and delicated functions keys
- Easy connectiong with central monitoring system
- 96 hours data storage
- Suitable for adult, pediatrics and neonates
- ECG, Spo2, NIBP, TEMO, REST, PR
- 12.1" Color TFT LCD Display
- 5 Para Patient Monitor

MultiParameter Patient Monitor

ME-8601 PATIENT MONITRO



Product Description

ECG / NIBP / RESP / PR / SpO2 / TEMP standard parameter, colorful and clear 12 inch TFT screen, backlight buttons, multiple display modes, big font, ECG standard full display, ambulatory blood pressure technology, anti-movement, special design against high frequency surgical unit and defibrillation protection, support masimo SpO2 authorization partner, 13 kinds of arrhythmia analysis, 15 kinds of drug dose calculation, built-in detachable rechargeable lithium battery, 4 hours battery life.

Features

- Colorful and Clear 12 inch TFT Screen, Backlight Buttons
- Multiple Display modes optional: Standard interface.
- Various Languages operating systems
- Built-in Detachable rechargeable lithium battery 4 hours battery life
- Data Storage: Stable and fast
- Alarming : Safe and reliable
- Dual Alarm light for Physiological and technical alarming

**MICRO PROCESSOR BASED RADIANT HEAT WARMER
DUAL SENSOR AIR/SKIN WITH UPGRARD TIMER IN JUMBO STYLE**



Feature

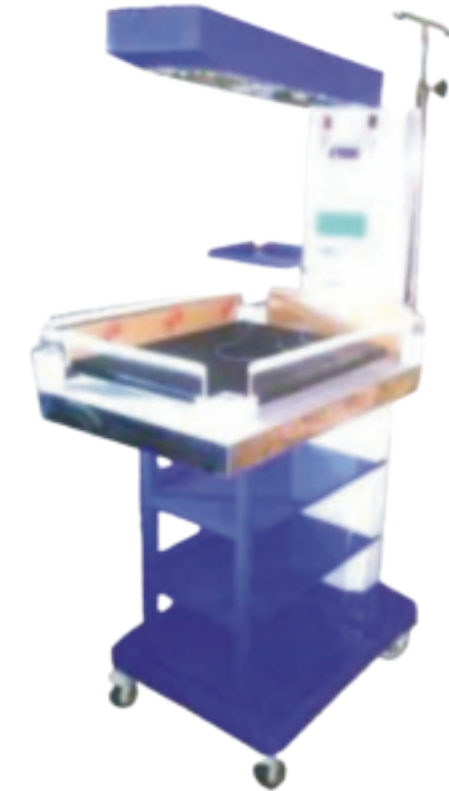
- Micro Processor base control
- Fiber Base
- PU Sole Wheel
- Round Acrylic sides with slide down
- Round Baby Bed
- LED Examination Light
- PT 100 Sensor



Safety Feature

- Sensor : Air Sensor
- : Skin Sensor
- Alarm : Low Temp. Audio Visual
- : High Temp. Audio Visual
- : Power Fail Audio Visual
- Heater Cut off : 100% to 0% in 10% each Interval
- Display : 50mm skin LED 25mm air LCD display
- Power Consumption : 750 Watt/220 V Ac
- Special Feature : Upgar count down timer with display

**MICRO PROCESSOR BASED RADIANT HEAT WARMER
DUAL SENSOR AIR/SKIN WITH UPGRARD TIMER IN JUMBO STYLE**



Safety Feature

- Micro Processor base control
- Fiber Base
- PU Safe Wheel
- Drop Down Sides
- LED Examination Light

Safety Feature

- Sensor : PT 100
- Alarm : Low Temp. Audio Visual
- : High Temp. Audio Visual
- : Power Fail Audio Visual
- Heater Cutoff : From 100% to 75%-50%
- : 25%-Off
- Display : 50 mm LED for Actual & Set Temp

**MICRO PROCESSOR BASED RADIANT HEAT WARMER
SKIN/MANUAL IN JUMBO STYLE**



Feature

- Micro Processor base control
- Fiber Base
- PU Sole Wheel
- Drop Down Sides
- LED Examination Light

Safety Feature

- Sensor : PT 100
- Alam : Low Temp Audio Visual
- High Temp. Audio Visual
- Power Fall Audio Visual
- Heater Cutoff : From 100% to
75%-50%
25% - Off
- Display : 50 mm LED for Actual & Set Temp

**SIMPLE RADIANT HEAT WARMER
SINGLE SENSOR**



Safety Feature

- Sensor : Skin Sensor
- Alarm : High Temp, Audio Visual
- Power Fail Audio Visual
- Heater Cut off : Direct at set point
- Display : 50mm LED Skin & Air
- Power Consumption : 750 Watt/220 V Ac



SIMPLE RADIANT HEAT WARMER DUAL SENSOR



Safety Feature

- Sensor : Air Sensor
Skin Sensor
- Alarm : High Temp, Visual
Power Fail Audio Visual
- Heater Cut off : Direct at set point
- Display : 50mm LED Skin & Air
- Power Consumption : 750 Watt/220 V Ac

Mob.: 9971087971, Email ID : info@lssengg.com, Website : lssengg.com

TYPES OF LED PHOTOTHERAPY



Single Surface LED Phototherapy
with Dual Time Totaliser



Single Surface LED Phototherapy
with Single Time Totaliser with Fiber Dome



Single Surface LED Phototherapy
plain



Double Surface LED Phototherapy
with Dual Time Totaliser



Double Surface LED Phototherapy
With Single Time Totaliser with Fiber Dome



Double Surface LED Phototherapy
Plain

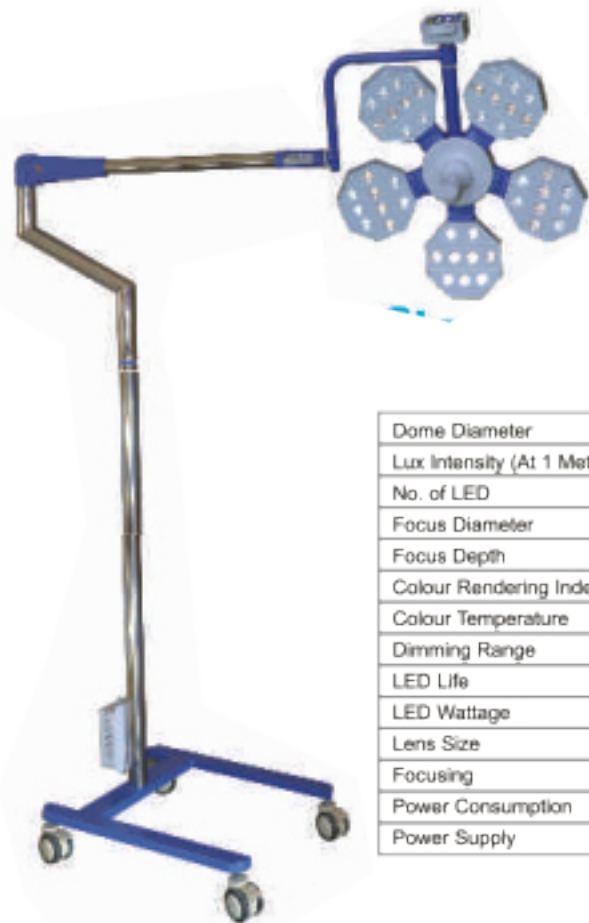
Mob.: 9971087971, Email ID : info@lssengg.com, Website : lssengg.com

Baby Warmer

LSS ENGINEERING

Specification

Dome Diameter	650 mm
Lux Intensity (At 1 Meter)	200000 x 2 LUX
No. of LED	45 x 2 LED
Focus Diameter	100-250 mm
Focus Depth	10-15 cm
Colour Rendering Index	96 RA
Colour Temperature	3200 - 5500 K
Dimming Range	0-100% (Digital)
LED Life	60000 Working Hours
LED Wattage	5 Watt Per LED
Lens Size	36mm (HD Lens)
Focusing	Yes
Power Consumption	100 x 2 Watt
Power Supply	220V / 50HzAC



Specification

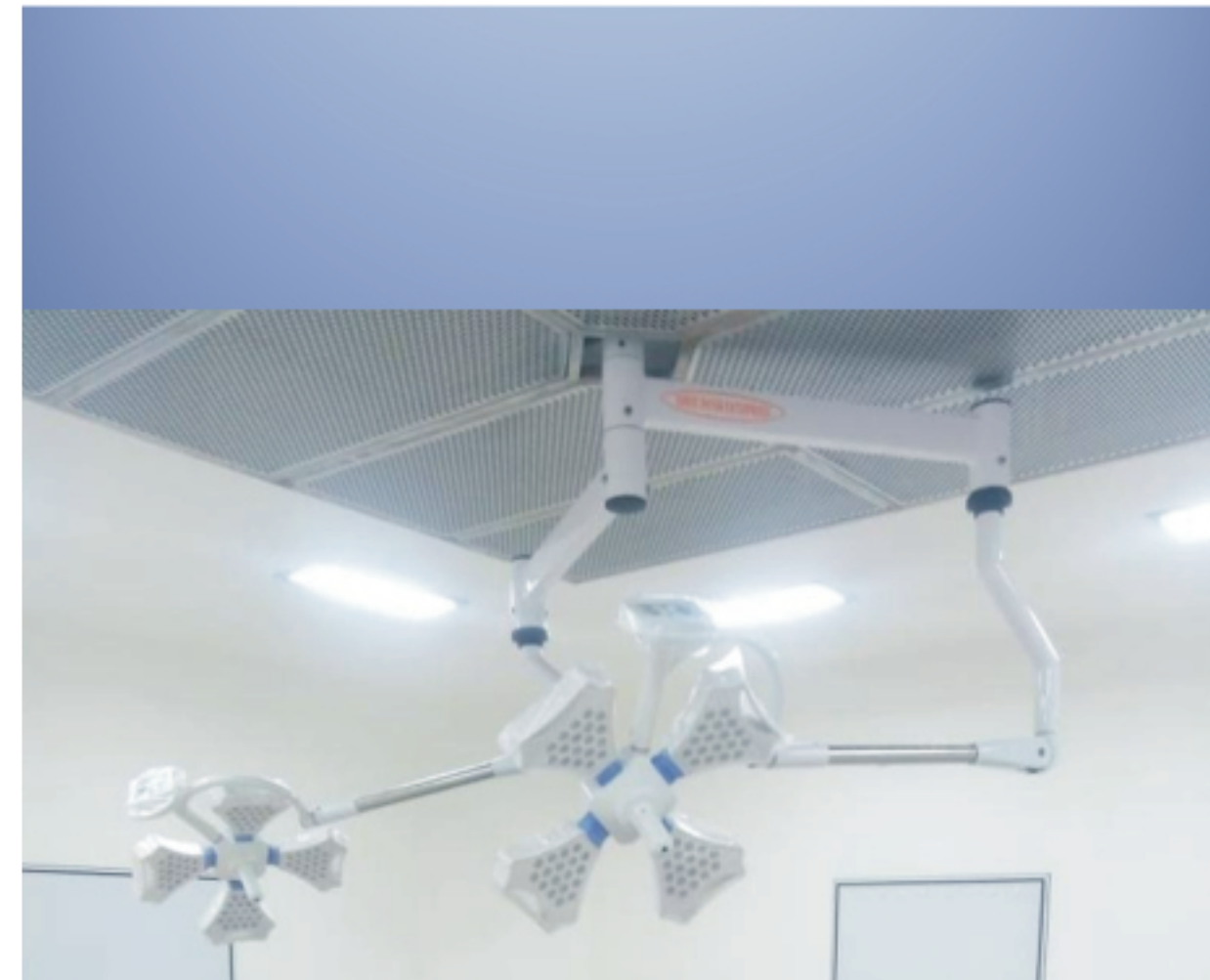
Dome Diameter	650 mm
Lux Intensity (At 1 Meter)	200000 LUX
No. of LED	45 LED
Focus Diameter	100-250 mm
Focus Depth	10-15 cm
Colour Rendering Index	96 RA
Colour Temperature	3200 - 5500 K
Dimming Range	0-100% (Digital)
LED Life	60000 Working Hours
LED Wattage	3 Watt Per LED
Lens Size	36mm (HD Lens)
Focusing	Yes
Power Consumption	100 Watt
Power Supply	220V / 50HzAC



Mob.: 9971087971, Email ID : info@lssengg.com, Website : lssengg.com

LSS ENGINEERING

OT Light



❖ Model No.	:	ASI-401
❖ Luminance	:	1,50,000
❖ Color Temperature	:	3800-5200K
❖ Color Reduction Index (RA)	:	91 Ra
❖ Depth Illuminance	:	10-15 cm
❖ Spot Diameter	:	100-150 mm
❖ Focusing	:	Manual
❖ Service Life of LED	:	40,000 Hrs
❖ Diameter of Light	:	670 mm
❖ Intensity Control	:	10-100 Digital
❖ Power Supply	:	220V/50Hz/60Hz
❖ Power Consumption	:	80 watt per dome
❖ Special Feature	:	Memory Function
❖ Number of LED	:	72 nos. Per dome
❖ Warranty	:	One year

Mob.: 9971087971, Email ID : info@lssengg.com, Website : lssengg.com